

Krod Energy Resources Ltd

RC- 1066563



C
O
P
O
R
A
T
E

P
R
O
F
I
L
E



krodenergy@gmail.com
info@krodenergyresources.com
www.krodenergyresources.com
0909316958 | 08066265649 | 08056141186

ABOUT KROD ENERGY RESOURCES LTD

Krod Energy Resources Ltd (KROD ENERGY) is an indigenous service provider to the oil and gas industry in Nigeria. It was incorporated as a limited liability company in Nigeria in 2012 to carry on the business of Engineering (EPC), Civil Construction, Pipeline Services, Procurement, Marine Logistics, It is also involved in the business of Marketing, Supply and Trading of Crude Oil and Petroleum Products (Offshore/Onshore);.

The Company is led by a dynamic management team; KROD ENERGY has been strategically positioned to achieve a sustainable competitive Advantage to achieve its vision. This is further enabled by the proper deployment of good corporate governance and risk management practices.

In fulfilling our vision, we shall continue to build and improve the capacity of the communities

We operate in. These Communities will be engaged in activities that ensure development and economic

Foundation, we shall always endeavour to be responsible corporate citizens

Krod Energy has been strategically positioned to achieve a sustainable competitive advantage to achieve its vision..

empowerment. Strict adherence to our belief in preservation of the environment shall be enforced. Through our KROD ENERGY

OUR SERVICES

(1) UPSTREAM

A. Mechanical Engineering/Construction

- i. Fabrication services
- ii. Maintenance



B. Civil Engineering/Construction

- i. Road/Bridge/Drainages
- ii. Building/Property Maintenance



C. Asset Integrity Management

- i. Pipelines Services and Monitoring

D. Equipment/Tools

- i. Heavy duty equipments (OCTGs/Pipes)



(2) DOWN STREAM

A. Marketing, Supply & Trading of ;

This business unit is responsible for the supply and trading of crude and petroleum products in partnership with the Nigerian National Petroleum Corporation/NNPC Retails and various Stakeholders, (Onshore and Offshore/Swam)



- Products traded include, Premium Motor Spirit (PMS),
- Automotive Gas Oil (AGO also known as Diesel),
- Dual Purpose Kerosene (ATK),

PETROLEUM PRODUCT HAULAGE AND FLEET MANAGEMENT



(3) EXPLORATION & PRODUCTION



Krod Energy Conducts Exploration, appraisal, field development and production of offshore fields.

We are experts at creating teams using both Krod Energy's resources and systems and resources from partners and contractors to do our work.

We build relationships with key players to work in a most challenging environment.

We believe in technical excellence, we would rather not do something than do something less than excellent.

We believe in the involvement of Government Agencies and the people where we operate, our goal is to make everyone part of the solution.

Our teams of experts include:

- a. Exploration / Development Team
- b. Drilling Team
- c. Production Team
- d. Facilities Team
- e. Infrastructure / Installation Team

Krod Energy and Gas Ltd has a portfolio of oil and gas assets in Nigeria and the Sub-Sahara We hold interests in exploration, development, and production of oil and gas concessions.

Our portfolio of assets is at varying stages of our upstream operations – exploration, development and production,

Our company's strategic focus is on the acquisition of near term assets



OUR PEOPLE

Krod Energy is made up of dynamic workforce with outstanding talent and seasoned professionals in the Oil & Gas industries; whose knowledge and passion for excellence are backed by cutting edge technology, Qualitative, Integrity and excellence innovative skills that we like to refer to as our strength. This is in line with our mission to recruit, retain and reward a high-performance workforce

This hardworking, virile and dynamic workforce is managed and controlled by a group of highly competent management team with tones of experience in the petroleum sector, giving our company an edge over others in terms of productivity and service delivery to our shareholders and clients respectively.

We have a qualified system for accessing key skills and experience to ensure that our staffs and consultants have significant and relevant experience relative to the job they are assigned. The company to ensure continuous professional development for our team allocates significant resources to various unique training and development programs.

Creating an environment that supports professionalism, integrity and innovation has led to higher performance team.

***... Strengthen client base
by ensuring excellence
and innovation in
service delivery.***

STRATEGY

- Strengthen client base by ensuring excellence and innovation in service delivery
- Enhance capability using the “build-borrow-buy” growth pathway
- Create and sustain strategic relationships that will guarantee superior delivery in a synergistic manner
- Recruit, retain and reward high-performance employees
- Conduct business affairs in a transparent, professional and responsible manner.
- Practice socially responsible investment ensuring business activities positively impact our host communities.
- Nurture and sustain mutually beneficial long-term partnerships
- Operate without harm to people and the environment

KEYSTRENGTHS

INDIGENOUS COMPANY STATUS:

There are currently numerous initiatives by the Nigerian government to strengthen the capacity of indigenous companies and to increase their activities in the Nigerian oil and gas industry.

SIGNIFICANT NIGER DELTA REPRESENTATION:

A great majority of the founders of the company are from the Niger Delta region of the country. This is the region that is responsible for more than 95% of the oil and gas assets. Our founders and directors enjoy an unrivalled influence in the region, and we possess strong knowledge of the local and regional dynamics

LEVERAGE ON OUR COMPANIES:

Our company (Krod Energy Resources Ltd) has provided complementary services and have remarkable track records in the oil support services especially in Bulk Petroleum Products Supply, construction and marine logistics.

STRATEGIC RELATIONSHIPS:

Government

International Oil Companies

Oil bearing communities

Original equipment manufacturers

FINANCIAL STABILITY:

We have developed a remarkable reputation with several financial institutions within and outside Nigeria and currently maintain a solid financial base to execute major projects. Our management account reports are readily available for concerned parties.

EXPERTISE:

We aggressively recruit and retrain the best talents to ensure high-performance.





COMMITTED TO CORPORATE RESPONSIBILITY

At KROD ENERGY, our Corporate and Social Responsibility strategies are focuses on:

- Our Communities
- Our People
- Our Environment
- Our Customers/Client's

The strategy aligns with our current business objectives to achieve sustainable long-term value growth for investors and creating a successful independent oil & gas servicing, exploration and Production Company in an increasingly competitive landscape.

The strategy is mutually beneficial, delivering benefits to global stakeholders and participants while bringing long-term benefits to Krod Energy and its shareholders.



Introduction

Who we are

fcX is privately-owned, engaged in the business of energy trading and has global market coverage through its network of affiliates and agencies in Nigeria.

fcX is a Vast integrated oil and gas aiming to be within the energy and maritime sectors, primarily operating from Bonga but with plans to establish subsidiaries located throughout the world.

Our trading presence is underpinned by a complementary infrastructure: currently storage, distribution and a marketing network proceeding to reining in the very near future. In all our physical operations we seek to work with partners which share our commitment to high international standards of operation. The infrastructure upon which we rely, from ships to jetties storage, is subject to our due diligence processes. As physical traders, we gain first-hand experience of economic fundamentals as they play out on the ground.

Global Strategy

We scan the horizon as visionary believers

by joining external partner's visions and beliefs with ours, setting the bar high of improving country's well-being and prosperity with high-quality products and services, for the advantage of its communities and future generations.

With an extensive knowhow of international and local relationship building in various sectors and regions across the globe, we have over the past years become determined on developing projects that would benefit and improve the country's environmental status, commercial and infrastructural channels and systems, in which serves its community in progression towards knowledge, quality and success. Being innovative and result-driven, focused on achieving exceptional results in new emerging markets, we have a firm mindset of developing quality and knowledge with the beliefs of becoming second to none in products and services improving the lifestyles offered to each region. In other words, we build partnership with key business decision makers, in highly competitive environments that demands continues improvement.

"With a combined experience in oil and gas trading of over 80 years, why risk working with anyone else but fcX."

Our principles

Respect

Respect others and succeed together

Honesty

Speak with truth and integrity

Empathy

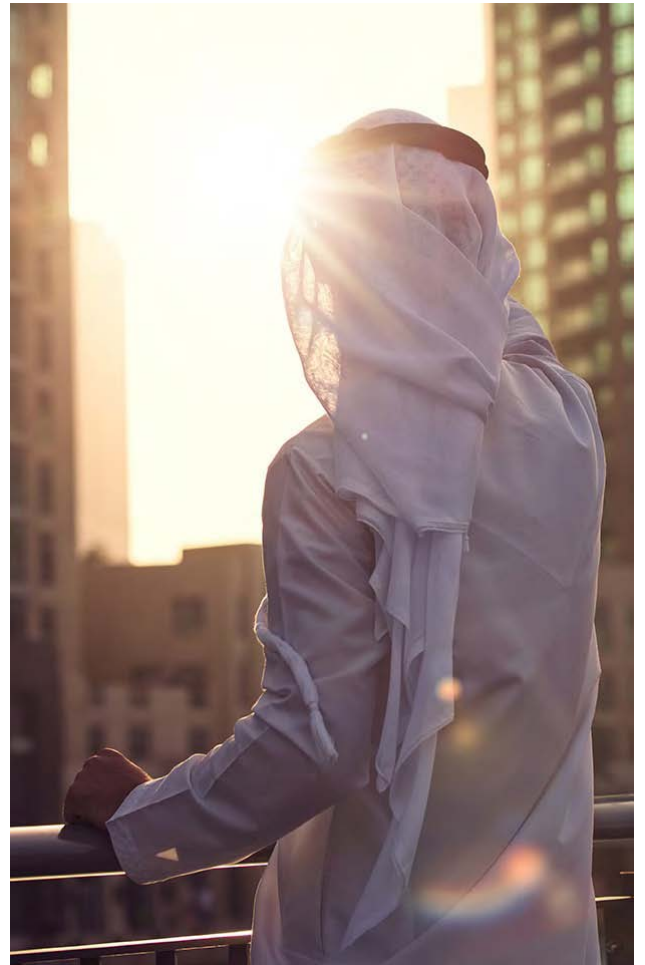
Care for our employees, customers, suppliers
and our oceans

Quality

Sell only products and services we can be
proud of

Strategy

Understand market trends to position
ourselves ahead of our competitors



What we do

Commodities We Trade

We understand that every market is different. Our network of teams at the areas we operate works closely with our customers to identify and develop solutions which work best for them, helping them to manage physical risks and optimize opportunities.

Sales

We procure our products: Gas Oil, Jet Fuel, Crude Oil, AGO, LNG/LPG, Petcoke, from our related sources (such as refineries, Crude suppliers and traders), sell and resale either as raw commodity to our customers or refine to the benefit of end-users. We further have crude oil trading specialist in our staff with first-hand knowledge and expertise in the markets, maintain long term relationships with supplying sources and buyers, and they are actively involved in developing projects, related to existing and new crude oil flow and other products.

Petrolius is a significant participant in global refined oil markets and refined commodities are the largest part of Petrolius total energy portfolio.

Petrolius trades globally. We have a presence and on the ground expertise wherever crude is produced, traded, stored and supplied to customers. This means that we operate in Africa, the Middle East and the Far East, as well as in Russia, the Caspian, and North and South America.

We have local partners in countries around the world covering everywhere from Buenos Aires to Sydney and Luanda to Latvia. Having a presence on the ground is key to our approach to getting first-hand

information as it happens and sharing that information, quickly and efficiently.

We believe that we offer a competitive advantage because we have the flexibility, speed and logistics expertise that our customers need and expect. More than 25 years experience of turning market intelligence into market advantage as well as our extensive links with all the major producers and refiners means that we are able to work with existing and new streams in any part of the world.

We also help our customers manage their physical requirements, all within an overall commitment to the development of long-term relationships that benefit all parties.

To offer all these services, Petrolius has established a Network of Cooperation's worldwide.

Shipping

Transporting oil from production sites to demand regions takes a robust and comprehensive supply chain that includes maritime transport and storage sites.

Shipping of crude oil and feed-stock is an absolutely priority and is at the core of our business. As such, transportation is an essential part of our operations. Shipping oil requires advanced technical expertise and excellent coordination. Our priority at every step in the transport process is to ensure the safety of our employees, the environment, our ships and our cargo. Through our joint venture partners who operates and invests in an interconnected system to deliver all our products to their final destinations.

Our people and expertise

fcX has a team with a long track record of working together, our team combines diverse capabilities and deep insight into the energy markets, offering tailor-made solutions across the whole spectrum of the supply chain.

We keep very close track of the price trends in the oil market along with credit flows and macroeconomic and political developments. With a high degree of adjust-ability, we seek to identify market opportunities in a volatile environment or shy away from sectors with deteriorating prospects.

We are rigorously committed to operational, market and financial risk management. Our understanding of the energy markets lets us implement robust hedging strategies, through the conducting of thorough due diligence and the utilization of a full range of cleared and OTC instruments, insurance, readily available funding, among others. The aim is to insulate ourselves and our clients to the highest degree possible from the volatile external market movements.



Sustainability

Goals

To become known as the best trading company we were famous for technical proficiency and moral respect and admiration as a result of the company commitment with its responsibilities with its clients.

Objective

Time and safety are always our priorities, as our company has always been desirous of clean record free from any delay in dates and free from accidents in its projects or with vehicles it has always dealt with the best insurance companies.

Ethics

Our culture is based on integrity and mutual respect. Our reputation in adherence to the highest ethics in work is one of our valuable rules. We undertake the responsibility of each work we perform.

Mission

Being the leading provider of high quality specialized products and related services in the various regions; – By high business ethics, optimizing profit by understanding the world around us, the future and consumer's needs.

Values

Where other companies will cut corners, we recognize that we are dealing with clients we desire to treat as family members in business context. This means we stand and operate on strong values that include 100% transparency, integrity, reliability and professionalism. Only high quality products and services shall be dealt with within our organization.

Vision

Create and bring forward inspiration and innovation, products and services of supreme quality and value, improving the lives of our surrounding and its consumers.



- Hydro-testing
- Dewatering
- Drying
- Air-Drying
- Vacuum Drying

Krod Energy Resources Limited pipeline commissioning gets quality product into your pipeline safely, quickly, and efficiently. Start production immediately and reduce economic risk.

Fabrication & construction



The considerable knowledge and expertise has laid the foundation for the quality and efficient company which prides in its reputation for supplying quality services that meets our clients' expectation. We have built up an expertise in managing different types of properties, constantly updating our management services to meet the changing demands in this field. We offer a scalable range of building management and intelligent building solutions and services - from individual subsystems to fully integrated intelligent buildings - that reduce risk while delivering world class operating and energy efficiency.

Risk Assessment

Sound risk management procedures are essential to assess and mitigate the risks associated with your industry. Our specialist risk management teams and laboratories operate worldwide, covering a wide range of industries. We identify and quantify specific risks and make decisions about how to manage and mitigate them in the future. Risk management from Krod - helping you identify and manage risks for your projects, operations and everyday business activities. Our comprehensive range of risk management services are in full compliance with international risk management standards and include:

- Risk management planning
- Risk identification
- Quantitative and qualitative risk analyses
- Risk handling
- Management of residual risk
- Project monitoring and management.

TANK FABRICATION / SHELL REPAIRS



The expectations for tank repair and construction have changed throughout the last 100 years. Standard practices in the 1940s are not the same as today. Consequently, many of the welded steel and riveted storage tanks across the country are in need of shell modification, replacement, and repair. KROD offers the following tank shell repair and replacement services:

- Complete Shell plate or shell ring replacement
- Nozzle repair and replacement due to improper weld spacing
- Door sheet repair and replacement due to improper door sheet installation\

Access Services

At Krod Energy Resources Limited, we give easy access to difficult or confined spaces utilizing solutions like Rope Access, Scaffolding or Tension Netting.

Bolt Torquing and Tensioning

Krod provides bolting solutions and requirements including torquing, tensioning and stress analysis with the use of state of the art equipment which include Hydraulic Torque Wrenches, Bolt Tensioning Cylinders, Hydraulic Nuts and more. Bolt Tensioning is a controlled method of tightening which applies preload to a bolt while stretching it axially. As a result, inaccuracies created through friction are eliminated and massive mechanical effort to create torque is replaced with simple hydraulic pressure. We utilize the latest technology to ensure that high quality services are provided to our clients and offers you full guaranty on the following:

- Assurance of uniform bolt loading and gasket compression
- Quicker assembly, disassembly of the joint
- Safety, prevention of accidents
- Prevention of fastener damage
- Our bolting technology develops, produces and distributes hydraulic, electric and pneumatic bolting methods for Tightening and loosening a wide range of industrial bolt connections.

Our Rope Access Technician operates from two ropes, working rope and a back-up. Safety rope and is permanently attached to both, each rope has a separate anchorage point. In the unlikely event of the rope becoming damaged or unusable, the safety rope will prevent a fall.

Rope Access provides maximum safety and is considered a highly efficient and flexible system that allow multiple disciplines in one team. Rope Access operations have minimum equipment requirements assuring easy logistics and minimum impact to concurrent operations, processes and or work environments.

The nature of Rope Access reduces project time, lowering downtime and minimizing the impact on ongoing operations, significantly reducing the cost to clients in comparison to traditional access methods.

Technicians are not only trained in Rope Access, but are multi-disciplinary operatives. Some of the services offered are: ACFM, Ultrasonic – Flaw Detection and Thickness Gauging, Magnetic Particle, Dye Penetrant, Visual Inspection, B&C Scan, Phased Array, Radiography, TOFD, API 653, API 580, API 510, API 4G, Coating Inspection, Remote Controlled Inspection (CCTV), Anode Replacement, Bolt Torque Tensioning, Blasting, Composite Repairs, Confined Space Entry, Corrosion Under Insulation, Derricks and Masts Refurbishment and Rebuilds, Electrical Works, Fabrication, Grinding, Helideck Structural Works, Insulation, Leg Inspections, Painting, Pipe Work Inspection, Removable Insulation Jackets, Rig Maintenance and more.



Fabrication Services

At Krod Energy Resources Limited, we pride ourselves on our flexible and innovative approach, which allows us to offer a wide range of Fabrication, Welding services and Structural repair solutions in Nigeria. The skills of our workforce and with our proven track record ensures we deliver our clients requirements on time. Krod Energy Resources Limited understands that the total company or system, not just the 'Safety Department', affects and is responsible for the safety of all employees.

- Safety is an essential component of our culture.
- Walkways
- Handrails
- Pipe Racks
- Skids
- Riser Clamps
- Decking





DRILL WASTE MANAGEMENT



Our Drilling Waste Management team provides solutions that meet the highest level of regulatory compliance while keeping the most cost-effective disposal options in mind. The EDS is a combination of chemical and mechanical processes which allows to dehydrate the drilling waste directly at the rig site. The output from EDS consist of filtered clean water (normally used for the preparation of new drilling mud and as plant/rig washing water and very dry solid).

REFUSE DISPOSAL / ENVIRONMENTAL CLEANING



KROD offers a comprehensive analysis of waste stream for best recycling solutions. Our approach to materials recycling is firmly built on the principles of economic and environmental sustainability. We provide a collection bins, carts, and containers for recycling services. We play a key role with you in protecting and restoring the environment. The Treatment and Disposal Solutions division manages hazardous and industrial waste requiring specialised treatment and processing before disposal at a suitable landfill site.

Technical Manpower



In the Oil & Gas Industry, Krod Energy Resources Limited has vast experience in the area of technical manpower supply in Nigeria. Krod Energy Resources Limited provides both professional and consultancy services, both contract and permanent staff alike. We are driven by a commitment to excellence in meeting our client's requirements. Our network of offices and years of experience give us a competitive edge and unique capability to provide high quality reliable staffing services. From project conception to commissioning, KERL will staff and manage your project with high quality personnel thereby reducing your risk of exposure. We currently have a database of over 10,000 active CV's covering different disciplines in oil & gas operations for both topside and subsea activities.

Industry experts in oil field engineering, manpower supply, Engineering construction management, Haulage & Logistics Services and procurement in the oil and gas sphere in Nigeria.

Specialist Coating Services

Krod Energy Resources Limited provides various types of specialist coating services to the Oil and Gas Industry, including Ultra High Pressure (UHP), hydro, traditional grit and steel ball blasting, fire protection & insulation as well as joint coating.

Our Specialist Coating Services Include:

- Blasting and Painting
- Passive Fire Protection (PFP)
- Field Joint Coating (FJC)

When given the opportunity, Krod Energy Resources Limited Engineering chooses the coating solutions with the most to offer when dealing with the demands of an end user's 'mission critical' facilities. As an AIM services company, we can provide the required access and the correct surface preparation of surfaces prior to application of coating materials according to client specification.



WWW.KRODENERGYRESOURCES.COM

Inspection Services

Krod Energy Resources Limited Inspection Services focuses on conventional and specialized Inspection and Non Destructive Testing (NDT) coupled with efficient management and cost effective implementations. We provide a complete integrated service to a variety of industries and Clients. At Krod Energy Resources Limited we utilize state-of-the-art equipment and highly trained technicians.

All our technicians are IRATA certified Rope Access Technicians all with a multi-disciplined approach and with a vast selection of disciplines. This allows for multiple scopes to be carried out single source.

Our Inspection Services Include:

- General Inspection
- Risk Based Inspection
- Corrosion Monitoring and Mapping
- Coating Inspection
- Welding & Coating Inspection

- Remote Aerial Inspection
- Close Visual Inspection

At Krod Energy Resources Limited we understand the importance of NDT services to our clients. Not only can our clients improve Use Asset reliability, reduce operational and maintenance costs, enhance safety and extend plant life, they can monitor and improve their operations across the board. These findings are documented with photographic support and we subsequently provide corrective recommendations for their rectification. Most importantly, items that are considered high risk are repaired by the technicians, after all, most of these are inaccessible without Rope Access.



WWW.KRODENERGYRESOURCES.COM

LIFTING EQUIPMENTS



WWW.KRODENERGYRESOURCES.COM

Lifting Equipment Inspection

Krod Energy Resources Limited is a full member of LEEA, both training and operations in Nigeria that carries out inspection and verification of all Lifting Equipment Inspection as per LOLER regulations in accordance with SI2307/2184 and DPR guidelines. They may include Non Destructive Testing / Evaluation (NDT/NDE) of all items where necessary as well as proof load testing. We are members of the Lifting Equipment Engineers Association (LEEA) in Nigeria.

We carry an extensive range of load test equipment including heavy-duty water bags for offshore crane inspections as well as Lifeboat testing equipment including Davit Testing.

Our Capabilities include the following:

- Loose lifting Gear Inspection
- Equipment Verification
- Mobile and Tower Crane Inspection and Testing
- Offshore Crane Inspection and Load Test
- Lorry Mounted Crane/HIAB Certification

The Lifting Equipment Engineers Association (LEEA) are established across the globe as the leading representative body for all those involved in the lifting industry worldwide. They are the respected and authoritative representative body for our Members who work in every aspect of the industry, from design, manufacture, refurbishment and repair, through to the hire, maintenance and use of lifting equipment.

The Association has played a key role in this specialised field for over half a century, from training and standards setting through to health and safety, the provision of technical and legal advice, and the development of examination and licensing systems.

We carry out our inspections/assessment on Lifting and Hoisting equipment as part of the client's risk assessment program or annual survey and these are aimed to meet all the legal and safety requirements for periodic inspections. Periodic inspection is intended to ensure that the equipment is safe and fit for use with all applicable standards and regulations. Following the thorough examination/Proof Load testing of your equipment with satisfactory result, documents of certifications and evaluation assessments can be issued to the client via our web portal with hard copies delivered within 48 hours.

A sound examination of lifting equipment and lifting accessories makes a decisive contribution towards functional safety when operating lifting equipment and lifting accessories.

All of our Inspection Engineers are fully LEEA qualified and in addition are qualified to current NDT standards through the ASNT.



Tank Cleaning Services

CRUDE OIL TANK CLEANING

Krod Energy Resources Limited uses three methods of tank cleaning services; Manual method, Downhole nozzle application method and Sludge Master Solvent Extraction method.

The following information is based on Krod tank cleaning practices for downhole nozzle application method:

A) Process and Equipment:

1st) It is in the best interest of the customer to recover as much oil as possible without significant solids contamination. This oil can be economically processed as crude unit feed rather than as a slop stream which is usually a refinery bottleneck.

2nd) The crude remaining in the tank is diluted with an available hydrocarbon like diesel, kerosene or jet fuel and is pumped off until analysis shows that the crude available above the sludge is minimized. This is done in a bath process, and permits maximum economic oil recovery.

3rd) The next step is to introduce water and JPX into the tank to wash the sludge and float the dispersed oil to the surface for recovery. In order to contact the sludge with wash mix, the sludge must be agitated to facilitate wash penetration. This is accomplished in various ways like : side entry mixers, butter worth type mixers, and rotary nozzles inside man ways or the roof ports. Many different types of rotating nozzles are available to agitate the sludge and allow wash mix contact. The number and location of the nozzles as well as flow rates would depend on the tank's access port number and location.

4th) The wash sludge mix is pumped from the tank and decanted to recover the oil and settle the sludge.

5th) If sour odors are present, then an additized version of JPX, JPX-E , can be utilized to eliminate the problem.





A CROSS SECTION OF IN HOUSE MEETING FROM OUR CONSTRUCTION ENGINEERS







NO PPE NO WORK



KROD ENERGY RESOURCES LIMITED/
CHESS SUBSEA ENGINEERING (UK) & CREWPETRO (INDIA)



CENTER FOR OIL & GAS TECHNOLOGY IN CONJUNCTION WITH KROD ENERGY RESOURCES
LIMITED (NIGERIA), CHESS SUBSEA ENGINEERING (UK) & CREWPETRO (INDIA)

Admission into Short Term Courses (Subsea Engineering and Drilling Courses) for 2019/2020 Session.

In partnership with Chess Subsea Engineering (UK) and Crewpetro (India), The Institute offers a conducive learning environment, full Internet access and virtual library, hands-on training using one computer per student. Students use industry software, case studies and undertake numerous field/laboratory visits. Students are encouraged to live and work together, thus encouraging the development of team spirit.

The aim of this Programme is to provide graduates in engineering and other fields with broad based training required for onshore and offshore oil and gas field development. The students will be taught jointly by lecturers from the University of Port Harcourt (Unipor), Nigeria, Crewpetro, India, Chess Subsea Engineering UK, as well as experts from the petroleum industry within and outside Nigeria.

SUBSEA & HYDRODYNAMICS ENGINEERING COMPETENCE HANDS ON TECHNICAL TRAINING

S/NO	COURSE CODE	NO. OF DAYS	LOCATION	COSTS
1.	ESPCDD Engineering of Subsea Pipelines from Concepts to Detailed Design Level 2 & Level 3	5	IPS Training Centre	N350,000 per participant
2.	ESURF's Engineering of Subsea Umbilicals, Risers & Flowlines Level 2	5	IPS Training Centre	N350,000 per participant
3.	FDDC/PDAS Feed & Detailed Design of Offshore Production Jacket Platforms & Analysis with SACS Level 1 & Level 3	5	IPS Training Centre	N350,000 per participant
4.	OVSOM Offshore Offshore & Subsea Systems 3D Drafting & 3D Modeling with AUTODESK INVENTOR Level 1 & Level 3	8	IPS Training Centre	N350,000 per participant
5.	OSFAA Offshore Offshore & Subsea Structures Finite Element Analysis (FEA) with ANSYS Level 1 & Level 3	5	IPS Training Centre	N350,000 per participant
6.	SSIIHA Subsea Structures Installation & Hydrodynamics Analysis with ORCAFLOW Level 1 & Level 3	5	IPS Training Centre	N350,000 per participant
7.	Introduction to Production & Exploration	10	IPS Training Centre	N350,000
8.	Introduction to Drilling	10	IPS Training Centre	N350,000
9.	Roustabout Training	10	IPS Training Centre	N200,000
10.	Floorman Training	10	IPS Training Centre	N200,000
11.	IADC RIGPASS	2	IPS Training Centre	N250,000
12.	IADC BASIC FIAT AID & CPR	2	IPS Training Centre	N250,000
13.	IADC CRANE OPERATION & SAFETY TRAINING	2	IPS Training Centre	N250,000
14.	IADC H2S AWARENESS TRAINING	2	IPS Training Centre	N250,000
15.	IADC PERMIT-TO-WORK (PTW)	2	IPS Training Centre	N250,000
16.	IADC Wellsharp Introductory Level	3	IPS Training Centre	N250,000
17.	IADC Wellsharp Fundamental Level	5	IPS Training Centre	N350,000
18.	IADC Wellsharp Supervisor Level	5	IPS Training Centre	N350,000
19.	IADC HAZARD IDENTIFICATION & RISK ASSESSMENT (HIRA)	2	IPS Training Centre	N250,000
20.	IADC CONFINED SPACE AWARENESS & ENTRY	2	IPS Training Centre	N250,000
21.	IADC BEHAVIOR BASED SAFETY	2	IPS Training Centre	N250,000

Successful students at the end of the programme shall receive Certificates jointly awarded by Chess Subsea Engineering, UK, Crewpetro India. Students will be presented with International Association of Drilling Contractors (IADC)

METHOD OF APPLICATION

Course Fees: Three Hundred and Fifty Thousand Naira (N350,000). PAYMENT: Account Name: Krod Energy Resources Ltd. Access Bank Plc: 0030240516. Call Kelvin @ 09093169589, Adanwa @ 09038462017 or email at info@krodenergyresources.com, www.chesssubseaengineering.org, www.crewpetro.com

© Ramona Link Rd, Chess Subsea Engineering Krod Energy Resources Ltd Office

ExxonMobil



PETROBRAS



TOTAL



Eni



COME VISIT US

P/M Address: Plot 53, Amadi Ama Extension Off, Peter Odili Road, Trans Amadi Industrial Layout Port Harcourt, Rivers State, Nigeria.

Abuja Address: 6, Mesayinia Street, Off, Dumez Road, Benin City, Edo State. 7, Henry Ajumoba Street, Off Ibusa-Ugwashi-Uku Road, Asaba Delta State.

Lagos Address: Muyiwa Close, off, Alayef Road, Ogba Lagos.

USA Address: Pleasant Run Road, Irving Texas U.S.A

CALL US NOW

Office Telephone: +234 909 316 9589

Mobile: +234 805 614-1186

SEND US A MESSAGE

info@krodenergyresources.com

cv@krodenergyresources.com

WWW.KROD ENERGY RESOURCES.COM